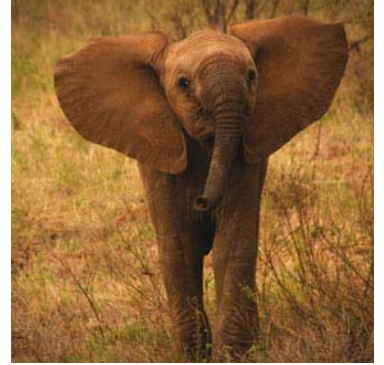


kenya: embolei village primary school project

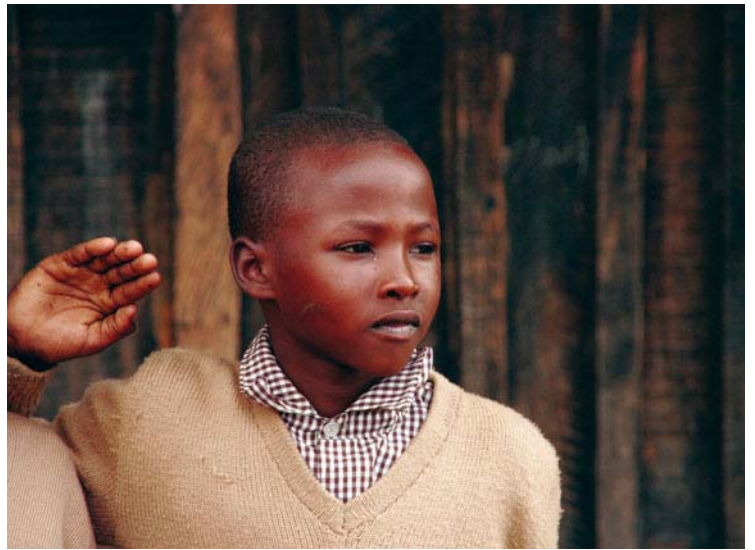


trip highlights

Working alongside the Embolei community to improve the school facilities

Returning home with an intimate insight into the amazing Masai culture

The magnificent view of the hundreds of Flamingos at Lake Nakuru National Park



Trip Duration	9 days
Grade	Adventure touring level
Activities	Community Project Travel, Wildlife Safari
Accommodation	9 day trip, 8 nights camping, 4 days community project, 3 day wildlife safari

welcome to World Expeditions

Thank you for inquiring about our Kenya: Embolei Village Primary School Project trip. Here at World Expeditions we are passionate about giving our clients the best chance to experience some of the remarkable cultures and wilderness regions of this very special part of the world. We are committed to making sure that our range of unique itineraries are well researched, affordable & tailored for the enjoyment of our small groups. These philosophies have been with us since 1975 when we began operating adventure holidays. We also put great effort into making sure that wherever we go we show a true respect for the local cultures and their environment. In Peru we have worked with our trek and tour staff for more than 20 years and have always managed to benefit from a tremendously good relationship that is reciprocal in every sense. We pay our staff well over award wages and provide them and their families with insurance and medical support. For the last two decades we have set up many help projects in the local villages where our staff live.

Why travel with World Expeditions?

Community Project Travel is a unique "giving back" program that we have operated since 2005 as a 'not for profit' division of our company. The program aims to assist impoverished communities that receive little or no funding from its government. Each project is sustainable in that the work is started and completed by the time you leave the community, resulting in a tangible benefit. Additionally we run the projects jointly with the community, encouraging ownership of the project at the local level and transferring skills to the local community, which assists in the long-term continuity of the project. Each project is selected on a consultative basis with the community, ensuring that the project is a real need of the community. Lastly, no particular skill is required to join a project; you just need to pack an open mind and a keenness to commit to physical work in a team environment.

kenya: embolei village primary school project

Help renovate the school in Embolei Village in the great Rift Valley, before visiting Lake Magadi and embarking on a fabulous safari to Lake Nakuru National Park



trip dates

2009 07 Sep - 15 Sep

2010 TBA

trip cost

\$2890 joining Nairobi

For competitive airfares and stopover ideas to join this adventure, contact our expert staff today to receive a detailed quote.

World Expeditions does not require single travellers pay a surcharge for travelling alone. On all of our adventures we will arrange for you to share accommodation with another traveller of the same sex and if we can not match you up we will provide a single room at no extra charge. If you prefer not to share a single supplement is payable to guarantee your own room. The cost of the single supplement is \$POA.

the trip

Embolei Village is spectacularly located in Masailand, overlooking the great Rift Valley escarpment in Kenya. We set out to help the local community restore the Embolei Village Primary School which is in desperate need of repair. Over four days participants will build new desks for the school, assist with the general refurbishment of the classroom facilities and install a water tank and guttering system allowing the school to harness rainwater, which is a valuable resource in this region. Following our project we visit one of the great lakes of this area, Lake Magadi and continue to view the magnificent game in Lake Nakuru National Park.

at a glance

DAY 1	JOIN NAIROBI AND DRIVE TO PROJECT
DAYS 2-5	COMMUNITY PROJECT WORK
DAY 6	LAKE MAGADI
DAYS 7-8	LAKE NAKURU NATIONAL PARK
DAY 9	TO NAIROBI

what's included

- 9 breakfasts, 8 lunches and 8 dinners
- internal transportation in private vehicles and 4WD vehicles on safari
- expert bilingual guide
- group medical kit
- all group camping equipment
- all equipment and materials required for the community project
- sightseeing specified in the itinerary
- National Park fees and camping fees valued at US\$225
- support staff while in Kenya

No local payments policy: Local cash payments are becoming increasingly popular with many operators. The policy seems to benefit the tour operators, more than the local economies or travellers, as it avoids local taxes and transfers the cost and risk of cash handling to travellers. In accordance with our Responsible Travel practices.

kenya: embolei village primary school project

Help renovate the school in Embolei Village in the great Rift Valley, before visiting Lake Magadi and embarking on a fabulous safari to Lake Nakuru National Park



Day 1:
Join Nairobi and drive to project
→ Meals: L, D

Arrive in Nairobi and drive over the Ngong Hills and descend into the Rift Valley towards the Soda Lake of Magadi. Just before reaching the Oligasailie Museum turn into the bush for about 10 kms. Set up camp near Embolei Village Primary School.

Days 2-5:
Community Project Work
→ Meals: B, L, D

We spend the next four days repairing and renovating the school facilities at Embolei Secondary School.

Day 6:
Lake Magadi
→ Meals: B, L, D

We say our goodbyes to Embolei Secondary School as we set off on our drive to Lake Magadi to visit lake shores, view the bird life and enjoy the hot springs, where is possible to take a hot bath in 35-40 degree pools. In the afternoon we visit the Oligasailie Prehistoric Museum to view the well preserved biological and cultural evidence of the evolution of man. We set up camp at the nearby Bandas. Later this evening we walk over the ancient lake bed in the vicinity of the museum.

Days 7-8:
Lake Nakuru National Park
→ Meals: B, L, D

We drive to Lake Nakuru National Park to take in the incredible sight of thousands of pink Flamingos that line the shores of the soda lake. We also enjoy the array of plains game to be sighted an the beautiful gallery acacia forest. Camp in the National Park.

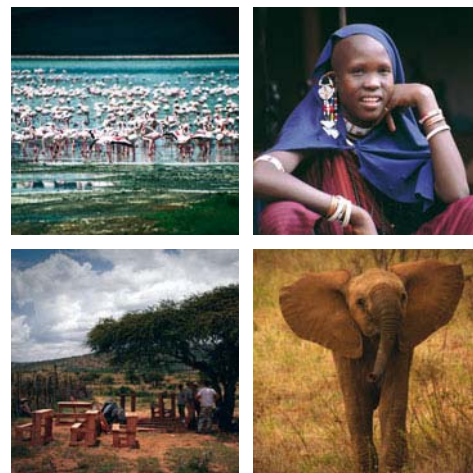
Day 9:
To Nairobi
→ Meals: B, L, D

Trip concludes in Nairobi, or continue with a climb on Kilimanjaro, Mount Meru or relax in Zanzibar.

Note: This itinerary is subject to change with any change in Community regulations as well as Governmental changes and natural circumstances beyond our control.

kenya: embolei village primary school project

Help renovate the school in Embolei Village in the great Rift Valley, before visiting Lake Magadi and embarking on a fabulous safari to Lake Nakuru National Park



fast facts

Countries Visited:
Kenya

Visas:
yes*

Vaccinations:
yes*

Group size:
Min. 06 Max. 16

Private Groups:
Yes*

Singles:
A single supplement is available for this trip*

Leader:
Expert local leader

Brochure Reference: Community Project Travel

*Ask our staff or your agent for more information

responsible travel

The environments we travel through are fragile. It is our responsibility as visitors to minimise the impact of our presence. World Expeditions were the proud recipients of the inaugural Australian National Travel Industry's Environmental Achievement award for our Responsible Travel Guidebook. This detailed guide to responsible & sustainable travel is provided to all World Expeditions clients before they travel. Please ask your consultant if you have not received your copy of our award winning book. Alternatively, you may like to download a copy from our website www.worldexpeditions.com

country information

Although lying on the Equator, Kenya is blessed with a varied landscape. The landscapes, range from vast desert land in the north, through the forest and snow-capped central regions of Mount Kenya, to the grassy plains and savanna in the south to the humid coastline. Similar to Tanzania the Great Rift Valley runs the length of the country and is home to an amazing selection of animals. Kenya's economy is largely agricultural and its main exports are tea and coffee, though tourism is a large provider of foreign currency. Kenya's population is over 22 million and is increasing rapidly. Most African people are either Bantu or Nilotic. There are also a distinct number of Somalis in the north-east and Swahili people on the coast along with Indians, British and Europeans found in the cities. The mountain environments are extremely fragile. It is our responsibility as visitors to minimise the impact of our presence. Deforestation is a one of the greatest environmental problems in these areas.

climate

Outside of the wet seasons Kenya has a very arid dry climate. The wet seasons are generally March-May (long rains) and October-November (short rains). Downpours occur mostly in the late afternoons, with the earlier part of the day generally being warm and sunny. Temperatures in Nairobi range from 11-23C in July and 13-28C in February. Nairobi and the highlands can get cold, especially in the evenings, during July and August. Kisumu on Lake Victoria can be quite hot and humid.

kenya: embolei village primary school project

Help renovate the school in Embolei Village in the great Rift Valley, before visiting Lake Magadi and embarking on a fabulous safari to Lake Nakuru National Park



trip grading

Our Community Project Travel adventures can be undertaken by anyone with a reasonable level of health and fitness. For the community project part of your trip you will not require a certain level of strength or physical ability, just an enthusiastic and positive attitude. A

project manager will direct and distribute the workloads amongst participants on a daily basis. There is no pressure to exert yourself physically beyond your limits during the project but you should be prepared to give 4 -6 hours of physical labour each day. A certain level of fitness will be required where there is trekking involved.

a typical day

Once at Embolei Secondary School we shall set about completing the identified tasks, be it building a water tank and guttering, or building school desks. You will be introduced to a local foreman who will coordinate the work. In advance of your arrival, all materials for the project will have been purchased and carried into the village. Your foreman will have had discussions with the community about the objectives of our project and will be able to direct the progress of this work during the allotted time. Normally, he will divide the group into sub groups to work on different components of the project. There will be a good deal of flexibility in the hours that you work each day but it is anticipated that you will be involved in labour work for up to 6 hours a day. The people from the village will of course be very receptive to your visit and the improvements that you are making that will bring benefit to the entire village. You can expect them to visit daily out of curiosity and also to help out.

Your safari's expedition staff will include a driver/guide for each vehicle and a cook for the whole group. The cook will be responsible for all of the cooking, preparation and purchasing of the food. In Kenya we use four-wheel drive vehicles equipped with roofs that opens to enhance the viewing. The standard Land Cruiser is designed to seat six passengers. The best way to enjoy the trip is to change seats as much as possible in this way everyone can be sure they have seen the countryside and wildlife from all angles. All of the personal luggage will be stored in a trailer, or on top of the vehicle. The vehicle will be guarded whenever it is parked in public places, but we recommend that you never leave anything of importance in the vehicle overnight, or when it is unattended. The food throughout East Africa is excellent, fresh and abundant. All safaris use meat, vegetables and fruit bought fresh from the many local markets. Our cooks have received high praise from all of our clients in so much so that when it is necessary to eat in hotels, the hotel food comes out second best.

what you carry

When not participating in the Community Project you should carry with you a daypack containing a water bottle, snacks, camera and wet weather gear.

equipment required

Although all the equipment required for the community project will be provided, we do suggest that you bring tough work gloves and a lightweight set of overalls or old clothes to use during the project workdays.

what's not included

- any meals not mentioned in itinerary
- aerated and alcoholic drinks on trek
- items of a personal nature such as phone calls, laundry, etc.
- tips
- airline & departure taxes
- international flights
- vaccination or visas
- travel insurance